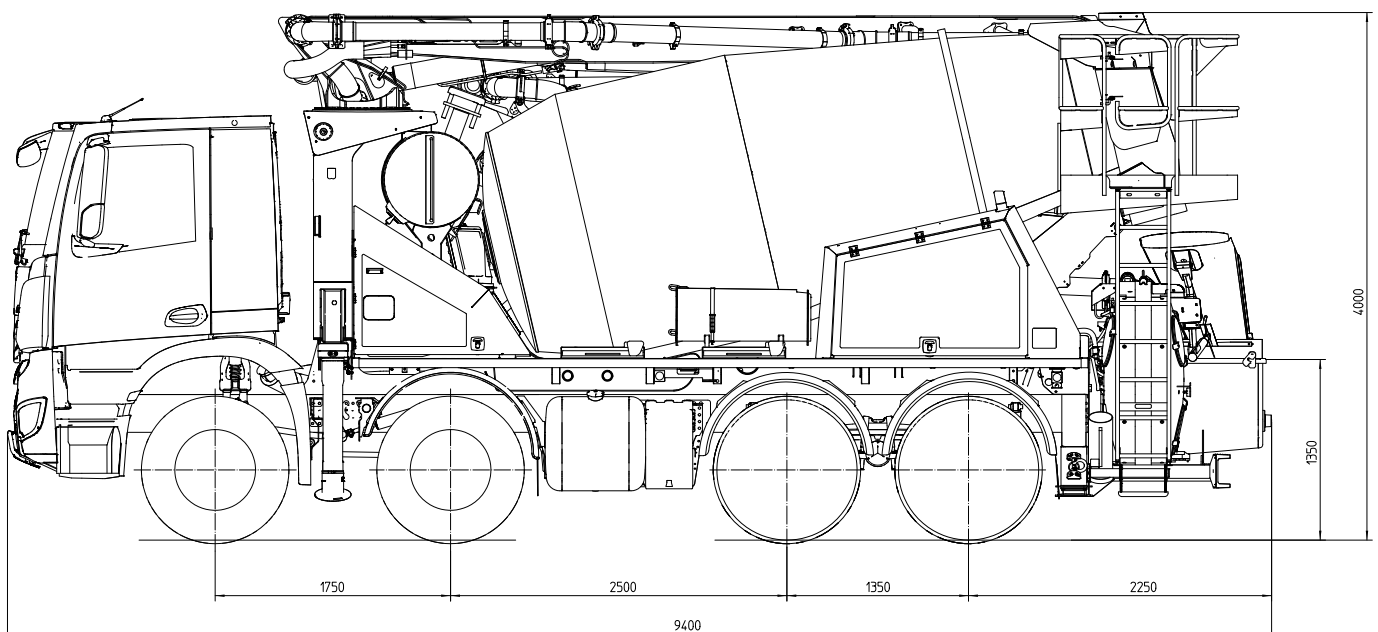


PUMI®

28-4.67 Q

Truck-mounted concrete pump with mixer

Rotor pump system



Note: Standard version. Subject to technical modifications and errors. Dimensions in mm, for example MB-Arocs, dimensions depending on the vehicle.
Pictures contain optional equipments.

Technical data

Boom TMM 28-4			
Number of arms			4
Reach height	m		27.5
Horizontal reach	gross	m	23.0
	net	m	20.3
Reach depth max.	m		16.9
Unfolding height	m		6.3
End hose length	m		3
Folding system			Z fold (Z)
Delivery line			DN 100 – 4.5

Pump TMP 60 Q			
Output	m ³ /h		58
Delivery pressure	bar		25
Pump tube	Ø mm		125

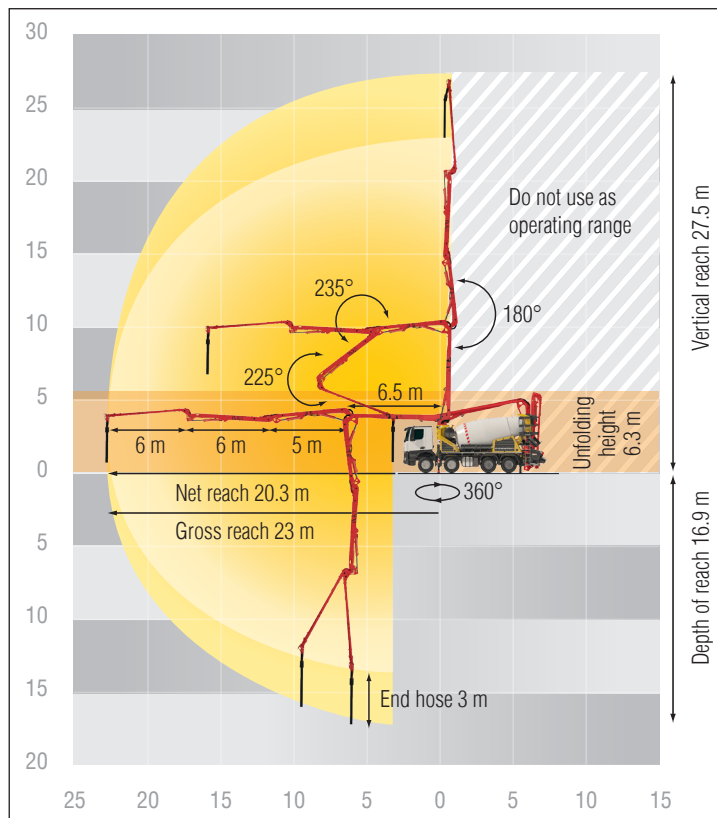
Maximum outputs of 58 m³/h and maximum concrete pressures of 25 bar may be achieved, depending on the equipment of the machine.

It is not possible to achieve maximum outputs and maximum concrete pressures simultaneously.

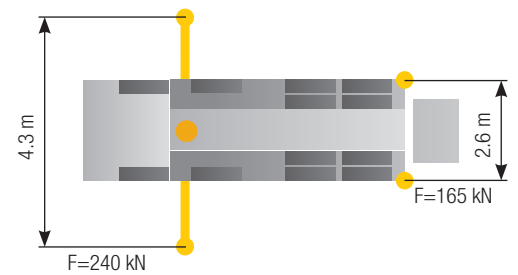
All data maximum theoretical.

Truck mixer 7 cbm			
Nominal capacity	m ³		7
Filling ratio	%		60
Drum speed	rpm		1 – 14
Water tank	l		630

Reach information diagram



Support



Delivery scope Standard Line

Agitator radio remot/on site controlled	EOC – Ergonic Output Control	Tool set incl. standard equipment
Agitator safety switch off (RFID)	EPS – Ergonic Pump System	Vaccum pump
Box for sponge balls	ESC – Ergonic Setup System	Water supply mixer (remote/on site)
Bracket for hammer and trowel	Lighting all control elements	Water tank 630 l, pressure tank
Cardan shaft maintenance free	Lighting hopper, mounted	Water tap under water tank
Central lubrication drum rollers, manual	Lockable storage space	
Central lubrication hinge first arm, manual	Mixer drum with 4 end spiral plates	
Chute adjustment hydraulic-electrically	Mudgard plastic	
Cleaning spray hose incl. bracket and spray nozzle	Operating manuals (1× paper, 1× CD-ROM), spare part list	
Compressed air connection rear side	Paint: 4-color putzmeister standard	
Concrete hopper with agitator	Platform for cleaning with drop guard	
Connection for watertank filling, right side	Radio remote control with display	
Cover for hopper	Rubber collar on concrete hopper	
Delivery line (1-layer) PM40 DN100	Second drip ring on mixer drum	
Delivery note-box	Sleuable chute	
Drawbar eye	Standard support system (incl. ESC)	
EMC – Ergonic Mixer Control	Support plates 4×	
End hose 3 m		

See quotation for exact serial delivery scope.
Comprehensive range of options available on request.